

20.684 ACRES  
TWENTY-TWO HILLS ROAD



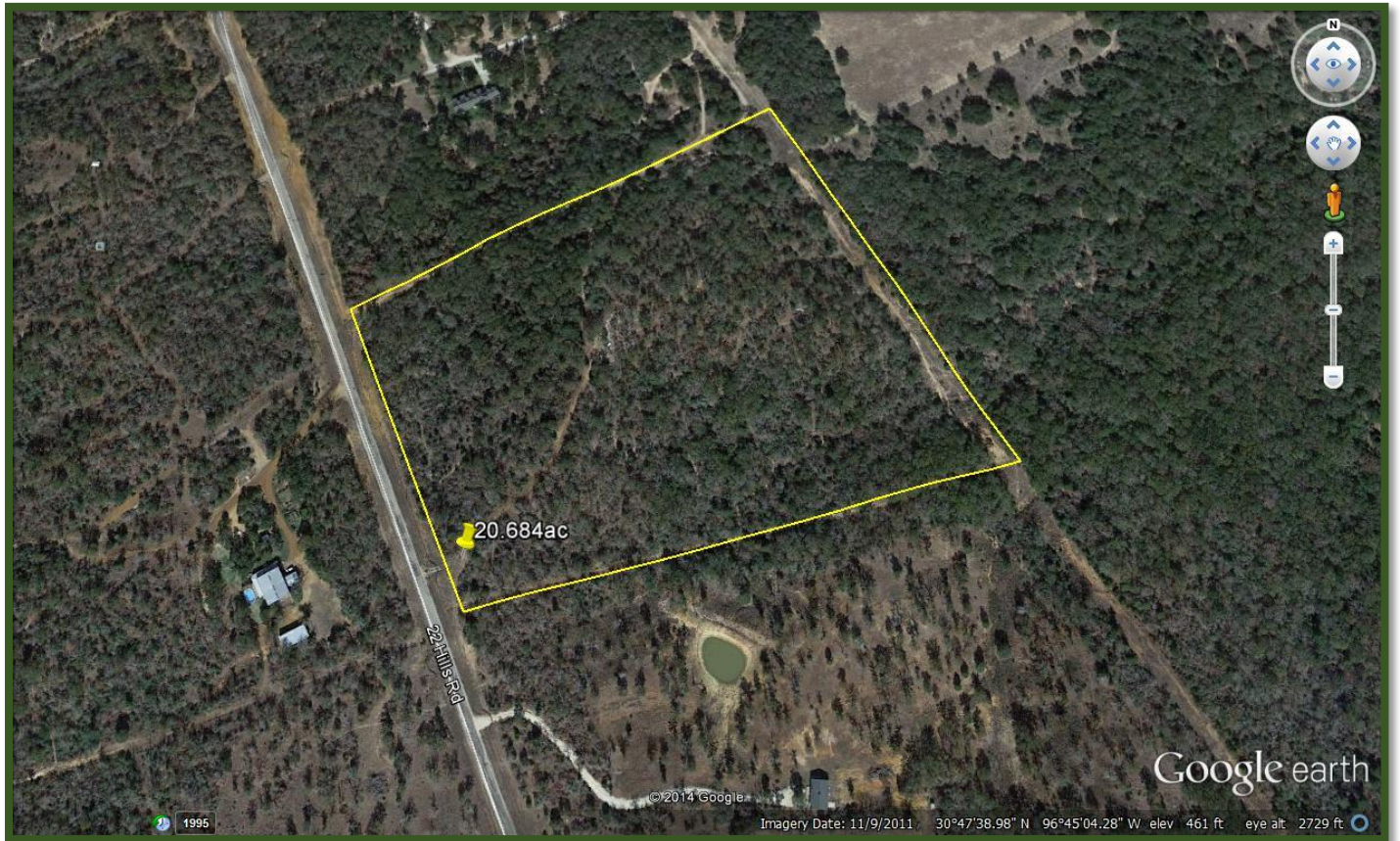
Wooded and completely fenced. Rolling terrain, paved road frontage and deed restricted.

Lots here are hard to come by. This is the only one listed for sale in almost a year.

Power along county maintained road, water well needed, but very good and plentiful ground water in the area. Recorded deed restrictions available upon request.



Great neighbors, beautiful area, small country community, good schools, churches, people and more. Surrounding properties boast nice, custom homes and well maintained landscapes. Great location within commutable distances to Bryan/College Station, Temple and Hutto/RoundRock, all within one hour or less. Austin and Waco are about 1.25 hours, Houston about 2 hours, DFW about 2.5 hours, or appx 3 hours to San Antonio or Galveston.



Offered at \$4,700.00 per Acre

Call listing office for appointment to view. Gate is locked.



### Cunningham Real Estate

1205 S. Market St - Hearne, TX 77859

[www.CunninghamRealEstate.com](http://www.CunninghamRealEstate.com)

(979) 279-2757

ALL INFORMATION CONTAINED IN THESE OFFERINGS, WHILE BASED ON INFORMATION SUPPLIED BY THE OWNER OR FROM OTHER SOURCES DEEMED TO BE RELIABLE, IS NOT IN ANY WAY WARRANTED BY CUNNINGHAM REAL ESTATE. THESE OFFERINGS ARE SUBJECT TO PRIOR SALE, CHANGE IN PRICE OR TERMS AND WITHDRAWAL WITHOUT NOTICE.